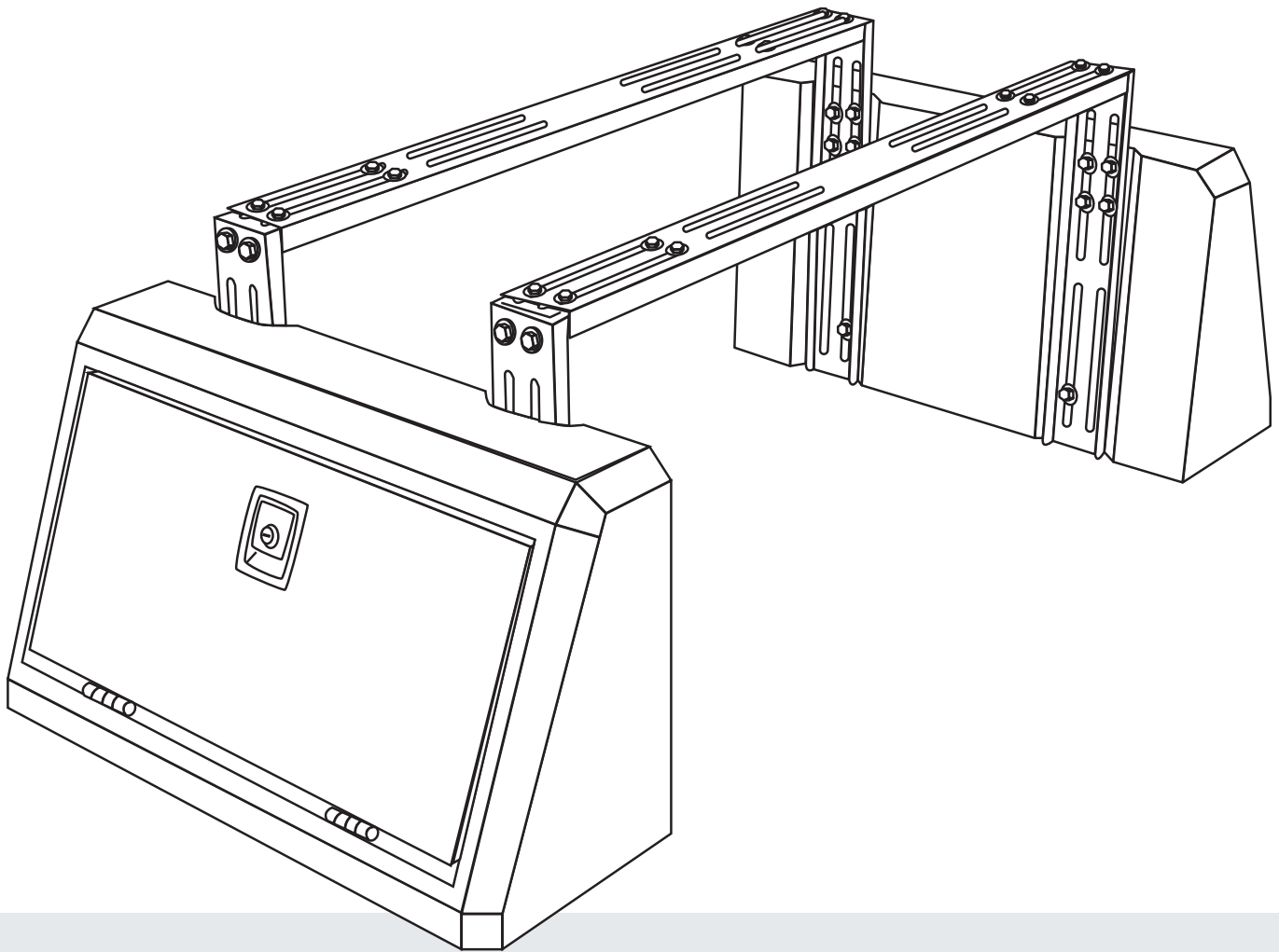




OVS

OVERLAND VEHICLE SYSTEMS

Pod Rack Universal Storage System Instructions



**CAREFULLY READ INSTRUCTIONS
PRIOR TO THE FIRST USE OF THE POD
RACK UNIVERSAL STORAGE SYSTEM**

Pod Rack Universal Storage Rack

SET-UP & CARE INSTRUCTIONS

Notice for all customers, Anti-Seize Lubricant Must be Used on all stainless steel fasteners to prevent thread damage and galling

GET TO KNOW YOUR POD RACK

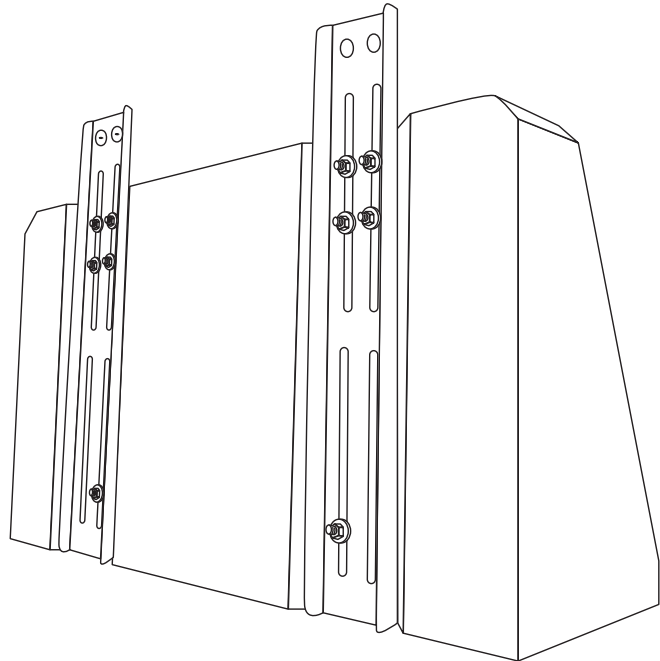
We recommend you check all parts are included prior to first use.

8x M10x40 Hex Bolts
8x M10x25 Hex Bolts
48x M8x20 Button Bolts
12x M8x16 Button Bolts
8x D10 Split Lock Washers
60x D8 Split Lock Washers
8x M10x20x2 Flat Washers
76x M8x20x2 Flat Washers

60x M8 Flange Hex Lock Nut
40x M8 Waterproof Washer
4x L-Shape Bracket
2x Crossbar
4x Mounting Vertical Bars
2x Storage Boxes
4x Mounting Clamp Sets (2 Piece each Clamp)

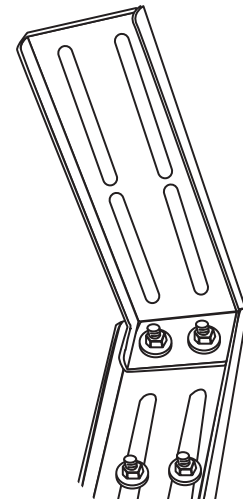
1

Install the Mounting Vertical Bars to the back of the Storage Boxes. Repeat for other box.



2

Install the L-Brackets to the Top of the Vertical Mounting Bracket



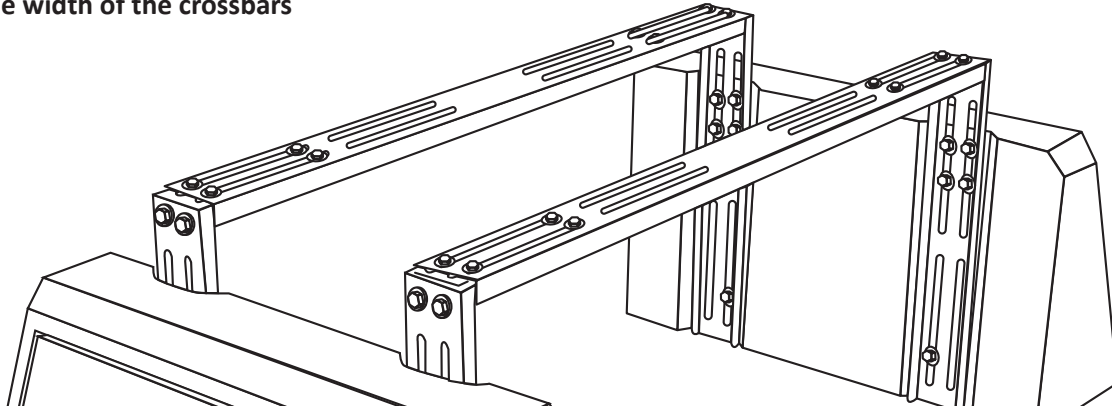
Pod Rack Universal Storage Rack

SET-UP & CARE INSTRUCTIONS

Notice for all customers, Anti-Seize Lubricant Must be Used on all stainless steel fasteners to prevent thread damage and galling

3

Loosely Install the top brackets to the top of the L-brackets as seen below. It is recommended to measure out the width of your truck bed before setting on top for the installation. Keep hardware loose so that you can adjust the width of the crossbars

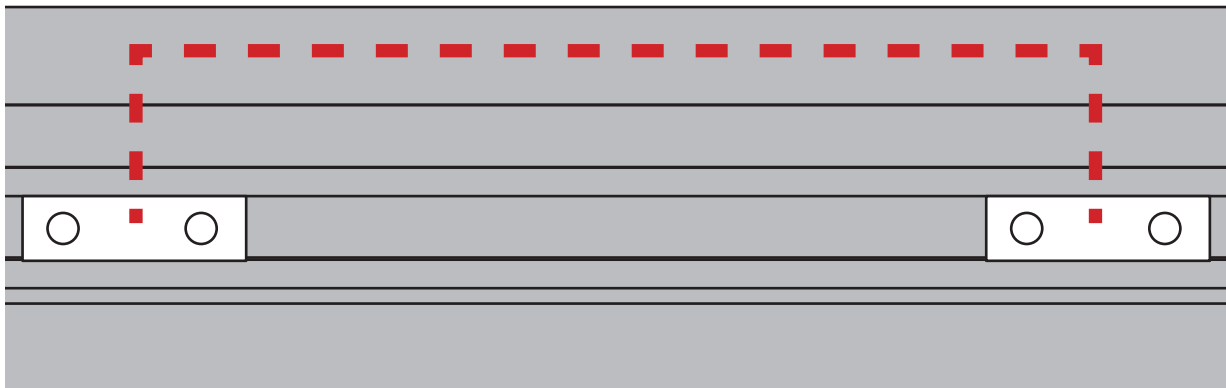


4

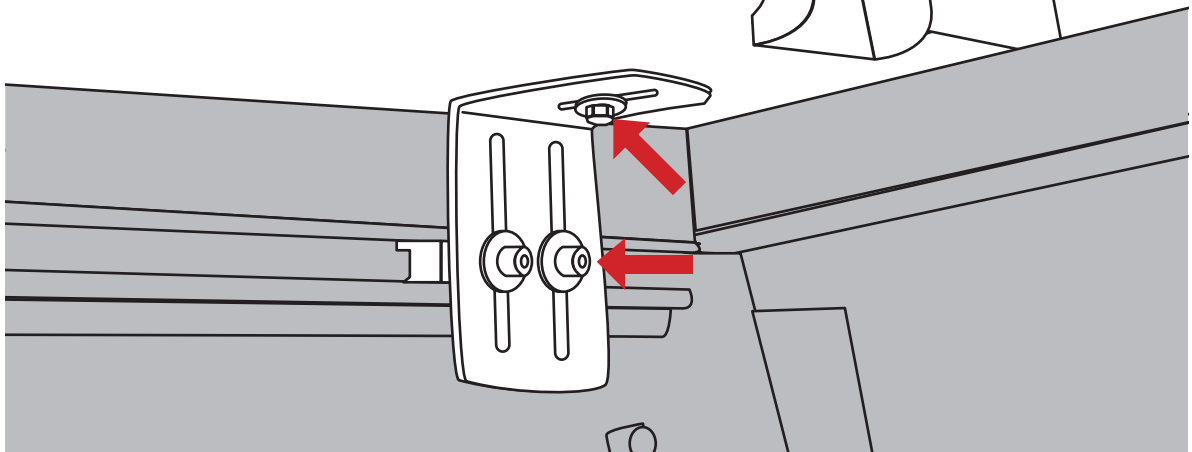
If you have a Utility Track, insert the Utility Track clamp plates through the track.
If you have a traditional Bed rail, skip to step 5

The center points need to be 15 inches apart

15 Inches



Install the L-Clamps directly to the Utility Clamp Plates then install the storage boxes to the L-brackets loosely



Pod Rack Universal Storage Rack

SET-UP & CARE INSTRUCTIONS

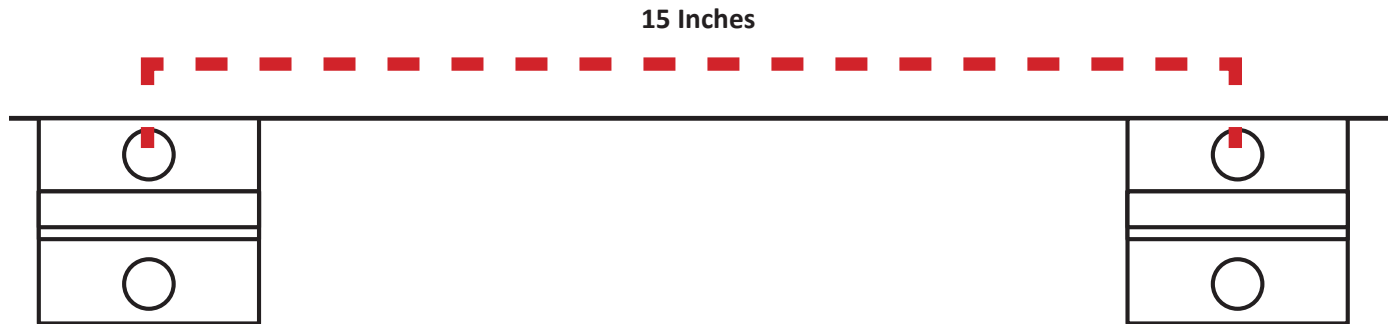
Notice for all customers, Anti-Seize Lubricant Must be Used on all stainless steel fasteners to prevent thread damage and galling

5

If you have a Utility track, go back to step 4.

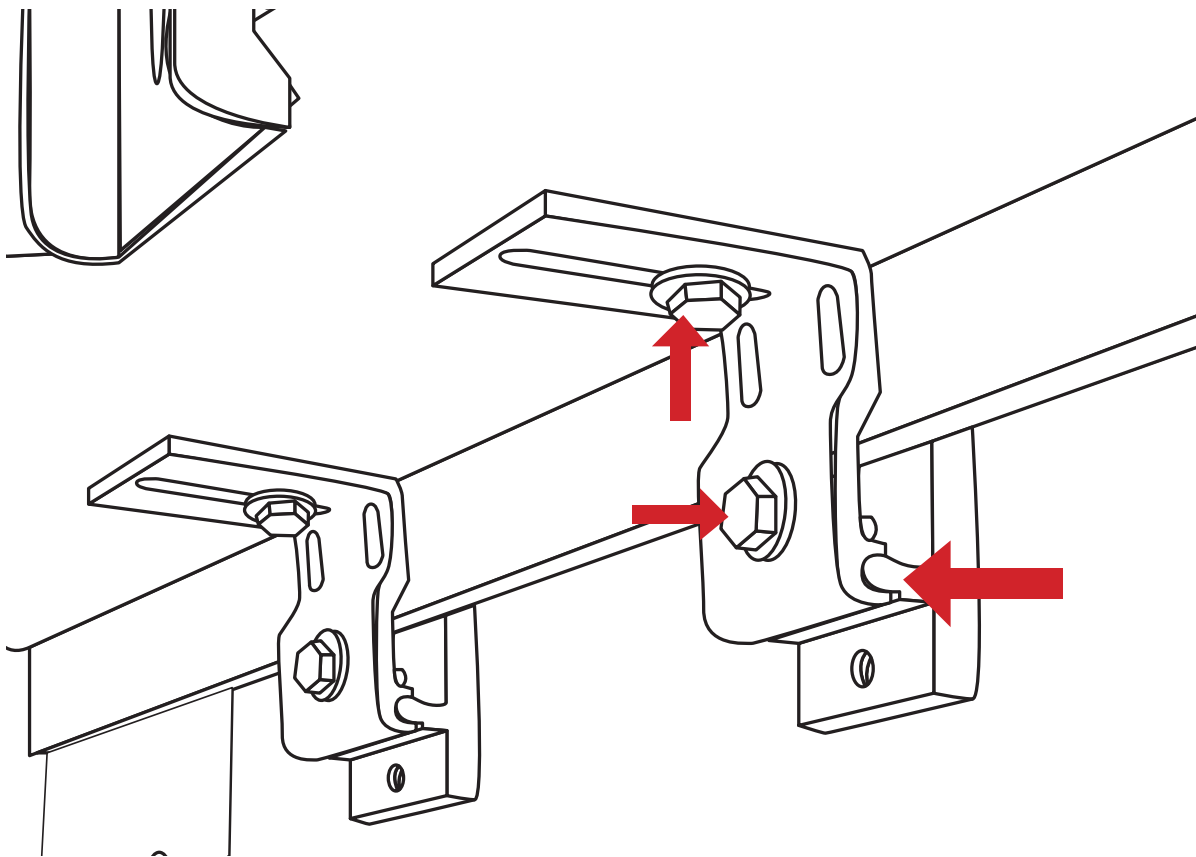
Bed Rail Only

Hook the back clamps to the lip of the inner bed rail and make sure they are 15 inches apart



Attach the Front Clamp L-Plate to the back plates, then loosely thread the bolts and washers

After that, attach the L-Plates to the storage boxes



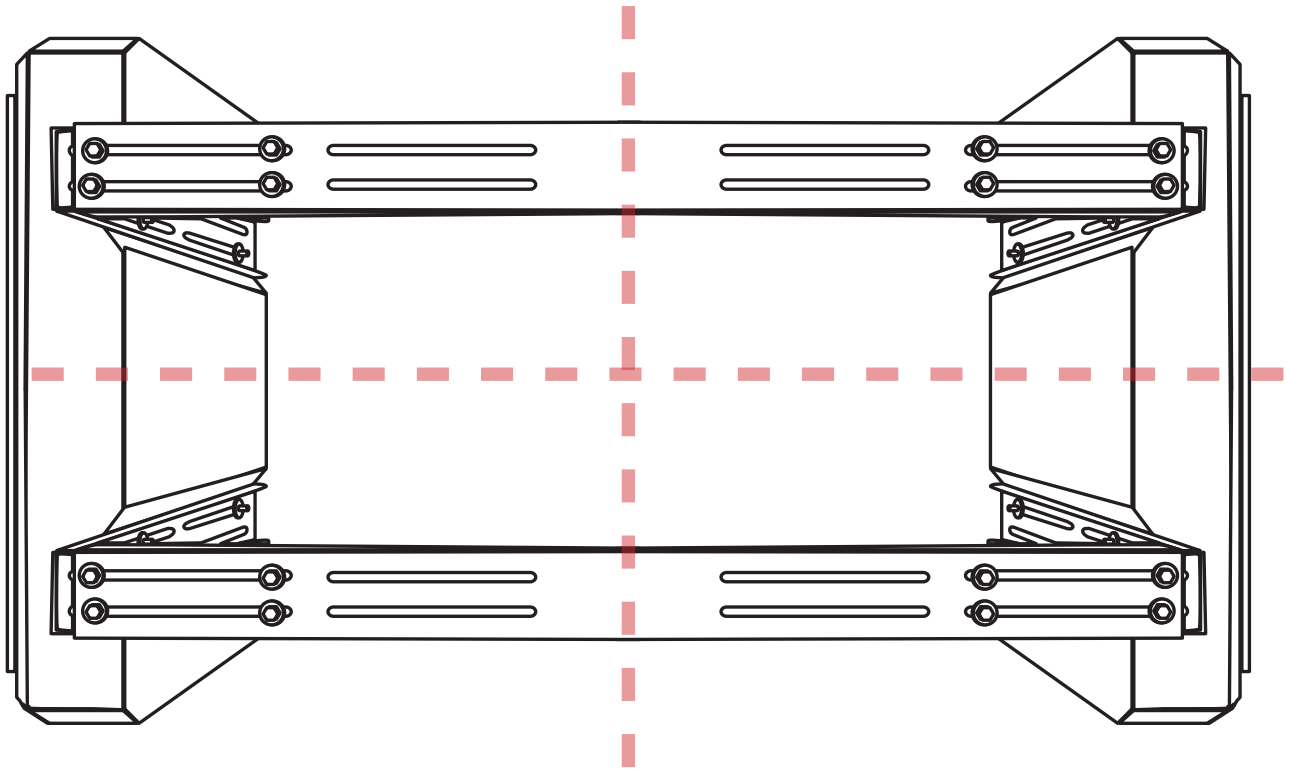
Pod Rack Universal Storage Rack

SET-UP & CARE INSTRUCTIONS

Notice for all customers, Anti-Seize Lubricant Must be Used on all stainless steel fasteners to prevent thread damage and galling

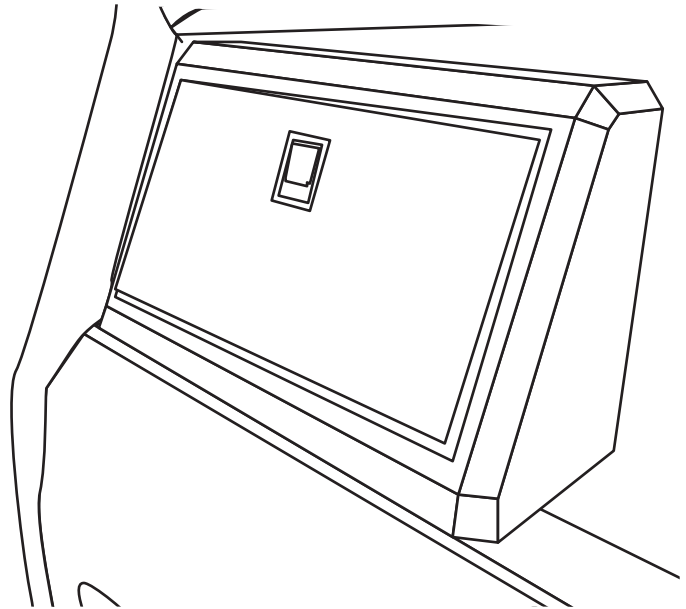
6

Finally, adjust the crossbars till the storage boxes are leveled perpendicularly.



Make sure the storage boxes are flush with the Bed Rail edges

Then tighten all bolts



Pod Rack Universal Storage Rack

SET-UP & CARE INSTRUCTIONS

PERFORMANCE TIPS

- Retorque all hardware after initial installation.
- Check hardware before long trips or trail use.
- Distribute weight evenly for improved stability.
- Keep heavier gear centered and low when possible.
- Use quality tie-down straps and mounting accessories.
- Periodically clean crossbars and mounting channels.
- Apply anti-seize to hardware in wet or salty environments.
- Remove mud, sand, and debris after off-road use.
- Keep accessory mounts tightened and aligned.
- Reduce wind noise by securing loose straps and gear.
- Store unused accessories indoors when possible.
- Inspect crossbars regularly for wear or corrosion.

WARRANTY

Limited Lifetime Warranty, 5 Year Finish Warranty

Notice for all customers, Anti-Seize Lubricant Must be Used on all stainless steel fasteners to prevent thread damage and galling

WARNINGS

- **Read all installation instructions before use.**
- **Verify all hardware is tightened before driving.**
- **Recheck hardware periodically, especially after off-road use.**
- **Do not exceed the vehicle or crossbar load capacity.**
- **Evenly distribute cargo across both crossbars.**
- **Secure all cargo properly before driving.**
- **Do not carry loose, shifting, or improperly mounted loads.**
- **Use caution with oversized loads in high winds.**
- **Increased vehicle height may reduce clearance.**
- **Heavy loads may affect vehicle handling and braking.**
- **Do not use damaged or bent crossbars.**
- **Inspect mounting points and hardware regularly.**
- **Keep loads clear of moving vehicle components.**
- **Remove cargo when not in use to reduce stress and wind drag.**
- **Failure to properly install or secure cargo may result in injury or damage.**



DO YOU NEED OUR HELP?



CUSTOMER SUPPORT 833-226-4863



SALES@OVERLANDVEHICLESYSTEMS.COM

WANT TO SHOW US YOUR RIG?
CHECK OUT OUR SOCIAL!

@overlandvehiclesystems



JUNE 2026